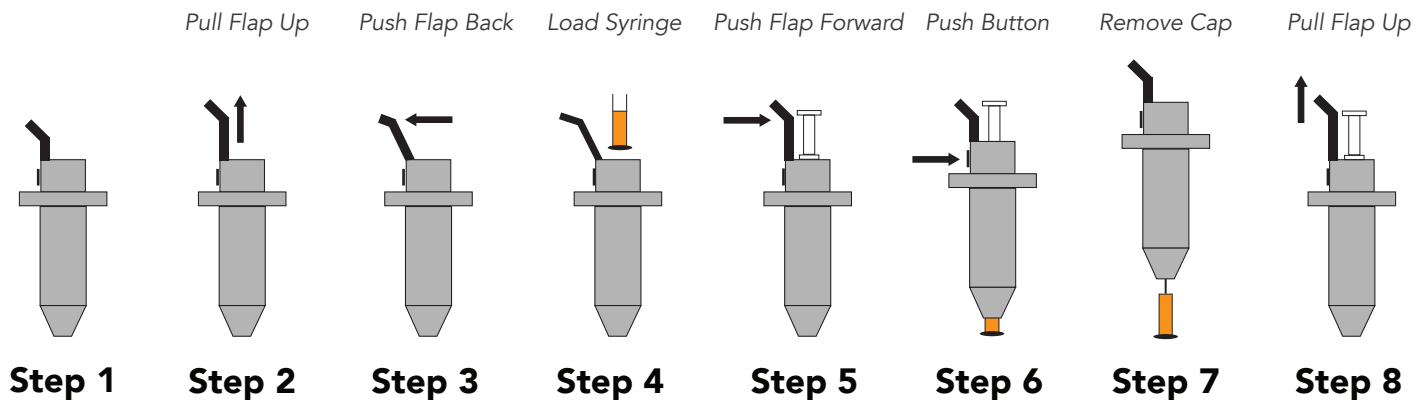


# Auto-Injection Step-By-Step Procedure



## Preparation

1. Wash your hands thoroughly. Use a new sterile syringe. Open a new alcohol pad.
2. Wipe the rubber stopper of the top of your vial with this alcohol pad.
3. Remove the white and the orange cap from the syringe.
4. Pull the plunger to the level equal to your prescribed dosage.
5. Pierce the rubber stopper in the middle and inject air from the syringe into the vial.
6. Turn the vial upside down; withdraw a small amount of fluid and inject it back into the vial (in order to get rid of air bubbles). Withdraw the fluid again and stop at the recommended dosage. Pull the syringe out of the vial and replace the orange cap, covering the needle. The syringe is now loaded.
7. Hold the auto-applicator at its upper body, gently pull the T-shaped cocking flap up then push it back to open (Steps 1,2 and 3 below).
8. Insert the loaded syringe into the top opening of the applicator, with the orange cap still on. (Step 4)
9. Push the cocking flap forward to lock the syringe in place (Step 5) and press the button to expose the orange cap (Step 6). Remove the cap (Step 7) and gently pull the cocking flap straight up (Step 8). Your syringe is now ready for use.



If you have any questions on how to inject please do not hesitate to contact us directly at (888) 779-2276

## Application

You should regularly alternate injection sites on both sides of the penis and apply pressure at the injection site after the injection to reduce the risk of scarring.

1. If you are right-handed, use the right hand to pull back the foreskin if necessary and use the left hand to hold the head of your penis by placing your thumb on top in the midline while the second and third fingers are directly below the head of the penis. Avoid pinching the foreskin between the fingers as this will make it difficult to keep a firm grip.
2. Stretch the penis out fully and swing it slightly to the left without twisting it; keep the penis stretched out during the injection.
3. Use your right hand (the free hand) to swab the right side of the penis with the alcohol pad. Pick up the applicator with this hand and hold it so that your thumb is gently placed on the button and the middle and ring fingers are on the opposite side. **DO NOT PRESS THE BUTTON AT THIS TIME.**
4. Place the applicator on the same side of the penis as the hand that holds the applicator (right) at the 2 o'clock position, anywhere from the base to the mid-shaft of the penis. Avoid the mid-line (12 o'clock) to avoid large blood vessels and nerves. Also avoid any visible veins by pushing or rolling them out of the way using the nozzle of the applicator.
5. Press the button to release the needle into the penis, and then slowly press the plunger down with your thumb until it stops- the injection is completed. Do not force the whole applicator deep into the skin to avoid over-penetration. When finished, gently pull the applicator out, put it aside and firmly press the site of injection with an alcohol pad for at least 2 minutes while letting go of the penis with left hand.  
Note: Apply pressure for at least 5 minutes if you are taking aspirin or other blood thinning medication.
6. Lastly, firmly massage the penis from the base to the tip about 10 times, using a "milking" action. Do not wait for the erection to occur but begin foreplay immediately. The penis should become erect within 5-15 mins.

Note: Once you become accustomed to the injection technique, swap hands so that you will use your right hand to hold the penis, your left hand to hold the applicator and inject to the LEFT side of the penis.

